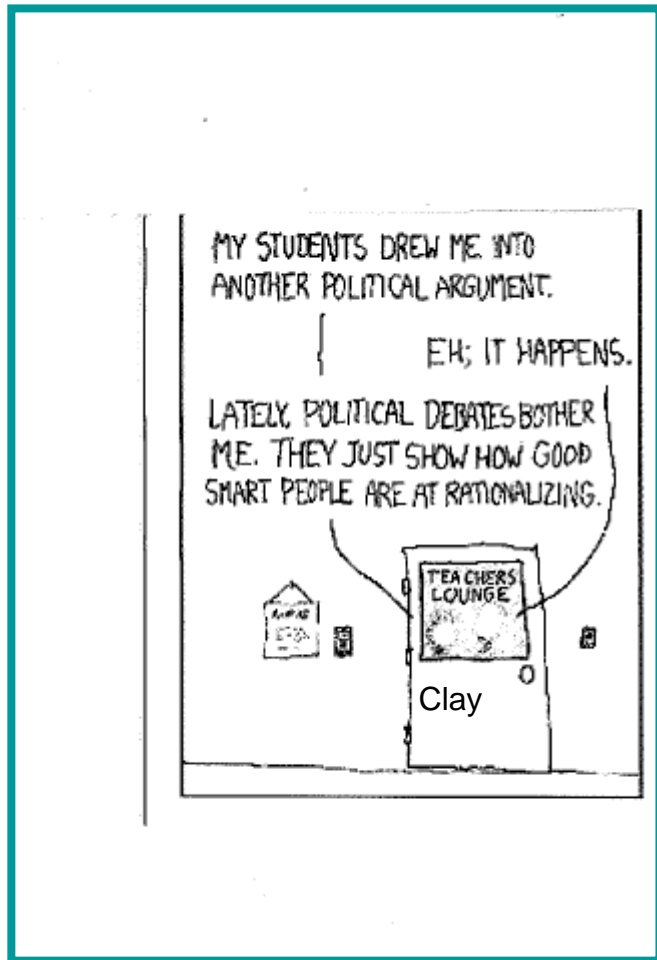
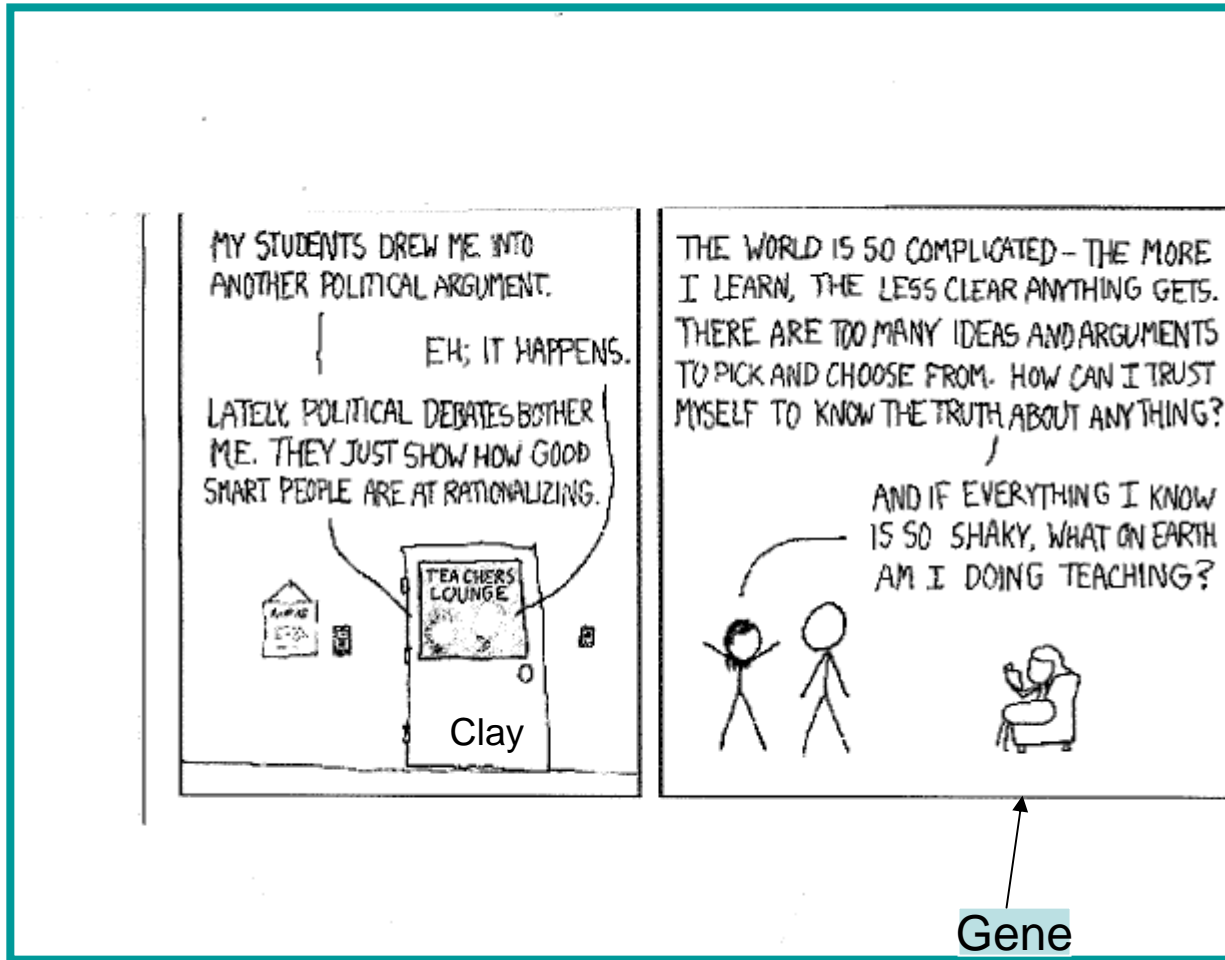


# Modeling Wind and Acceleration

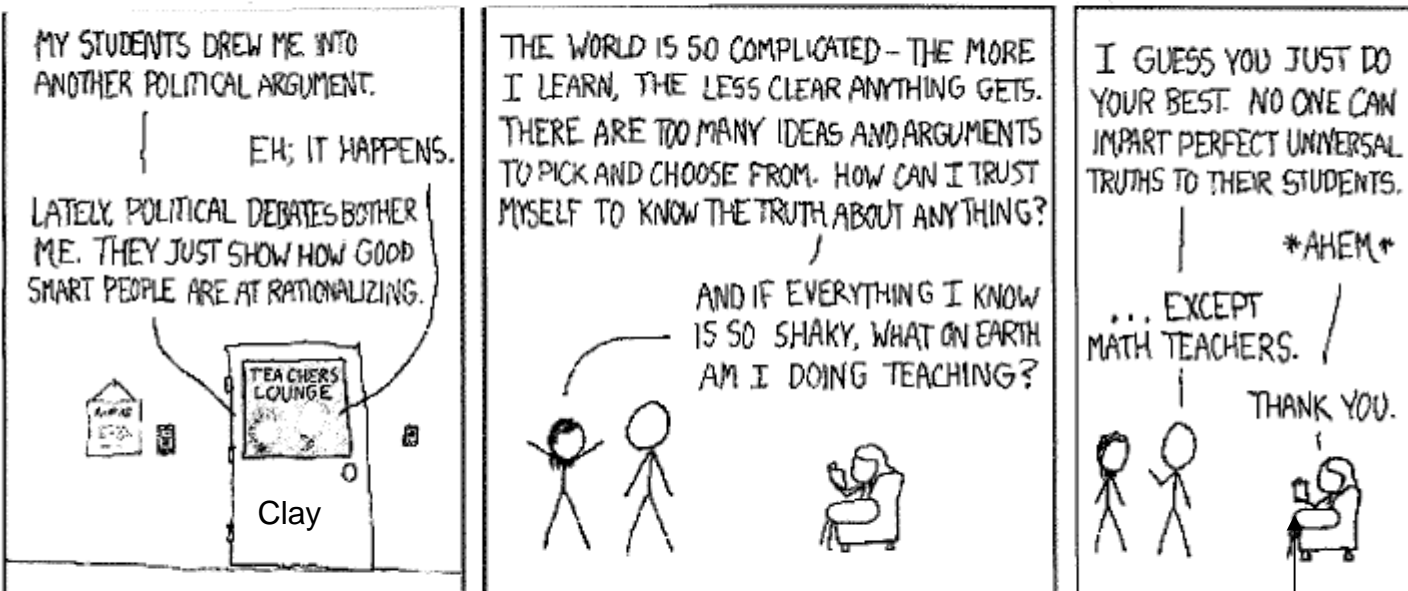
# Gene Buczynski Mathematics South Bend Clay High School



# Gene Buczynski Mathematics South Bend Clay High School



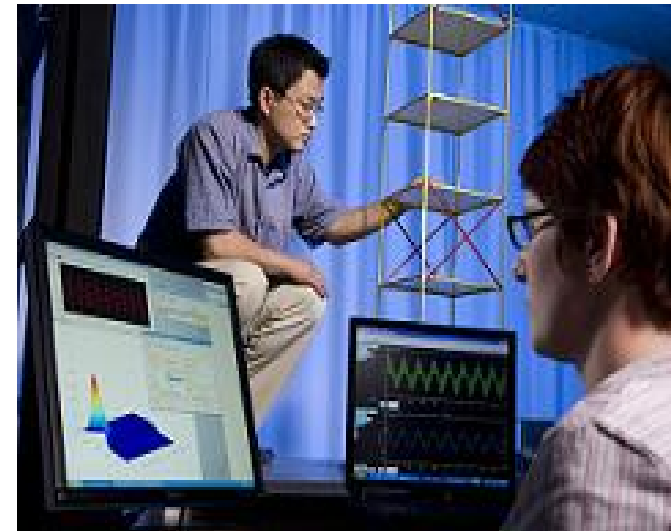
# Gene Buczynski Mathematics South Bend Clay High School



Gene

# DYNAMO Lab

The Structural Dynamics and Monitoring or DYNAMO Laboratory in the Department of Civil Engineering and Geological Sciences at the University of Notre Dame is a teaching and research facility dedicated to furthering our understanding of dynamic effects on structures and strategies for their mitigation.



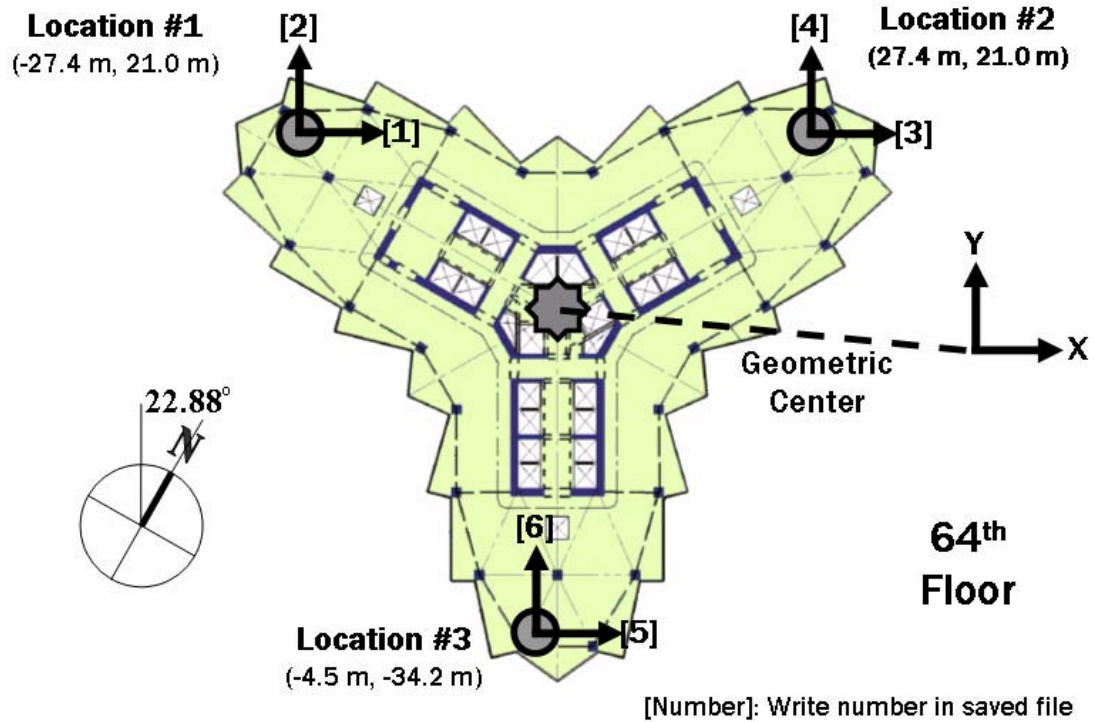
Dr. Tracy Kijewski-Correa



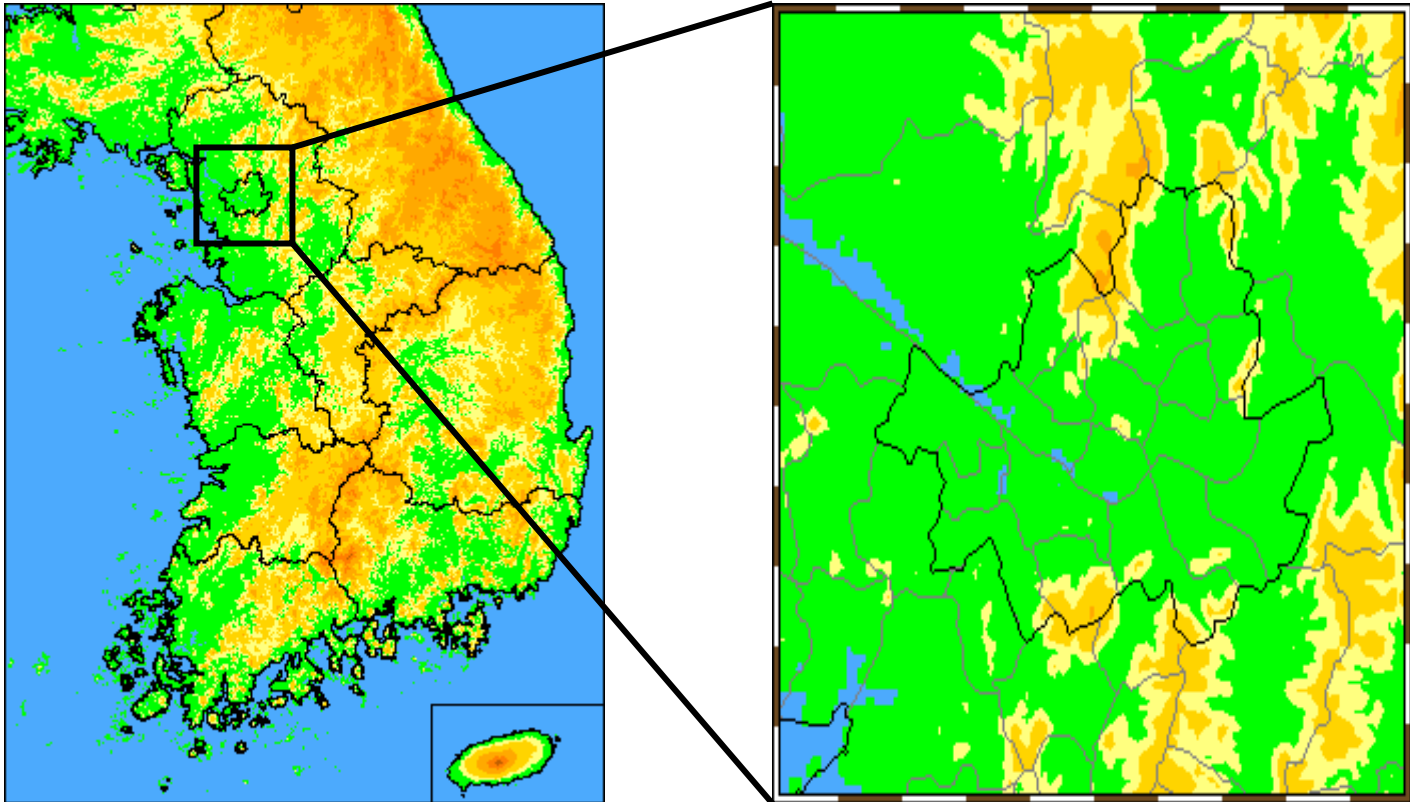
**Samsung  
Tower Palace III**

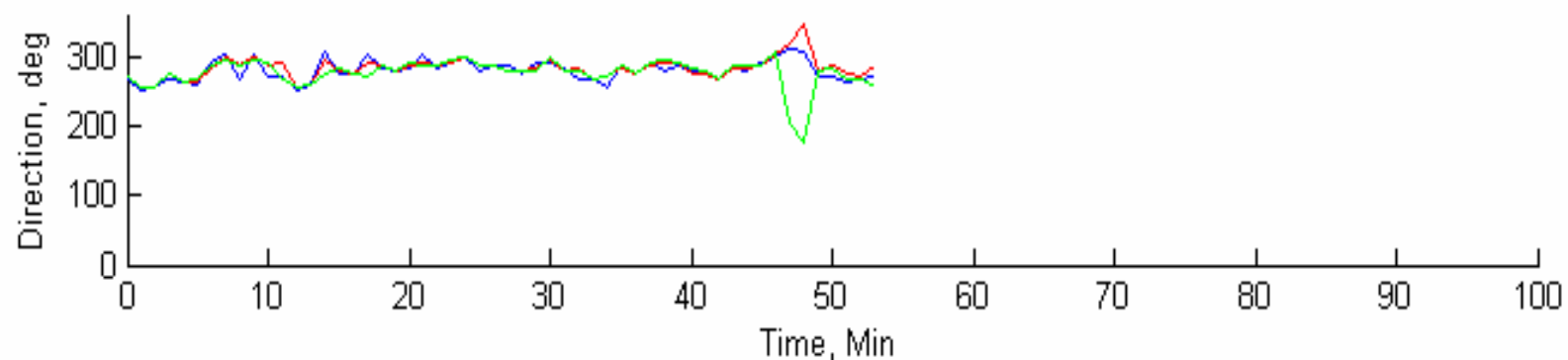
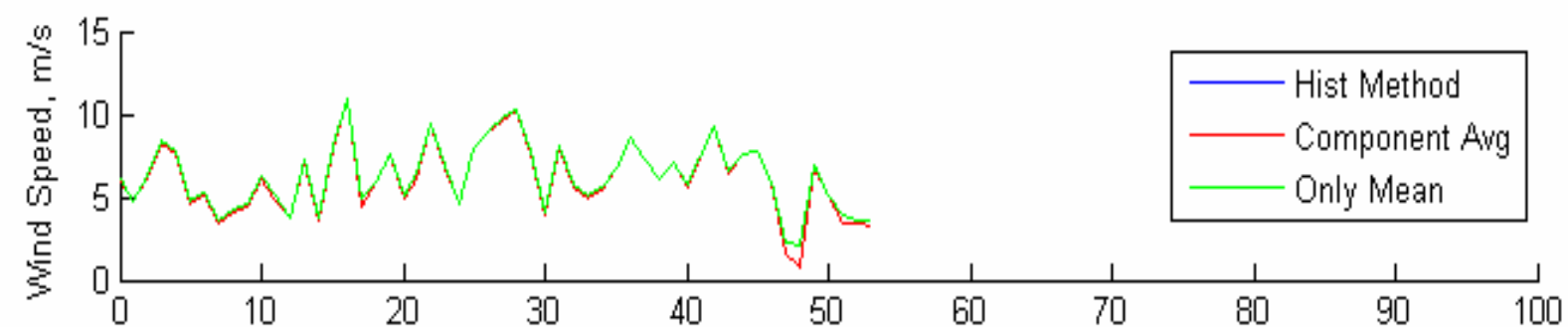
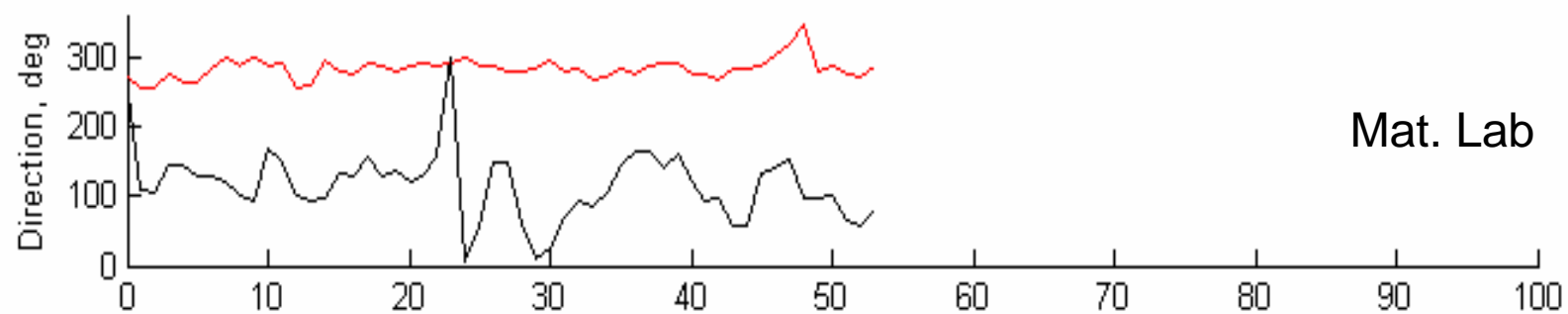
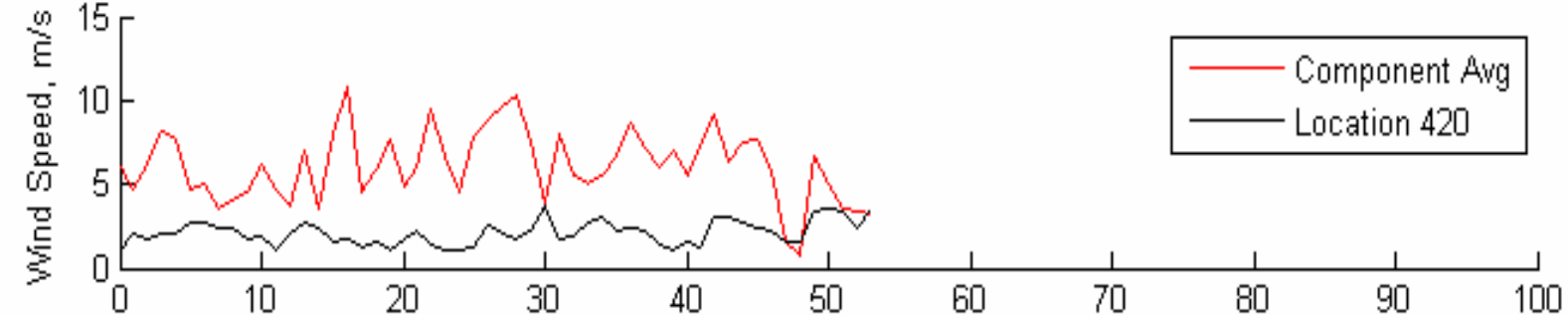


# Location of sensors / Anemometer on the roof



# KWA Weather Report -- Harvest the Data on Wind Speed & Direction





# Boston

- The glass skin suffered massive technical problems.
- Many of the 10,000 windows habitually fell out.
- The building responded to the pressures of wind and changing heat.
- Not a story to remember when you're standing next to the floor-to-ceiling windows on the (now closed) 60th floor observation deck.



# Bridge Activity with EERI



Special thanks to Dr Kwan, Su,  
John, Will, Dave and Steve.

